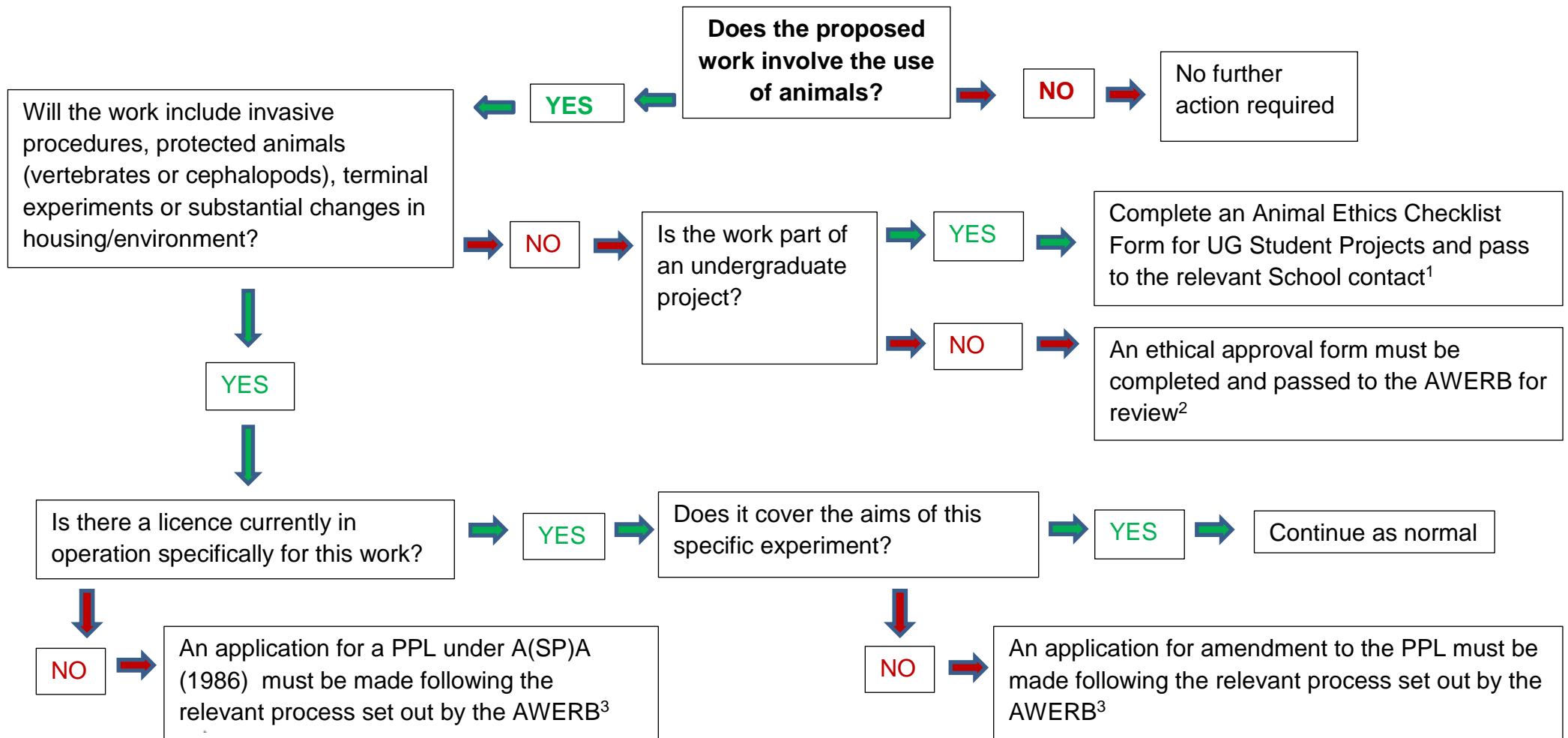


## Ethics Application flow chart



1) The relevant contact within the school will review the document and either approve it, return it for comment or in some cases may pass it to the Animal Welfare Ethics Review Board for further discussion.

2) A subset of the AWERB will review the document and decide if the application can be approved as is, requires further comment or has the potential to be classed as a licenced procedure.

3) Please see <https://www.plymouth.ac.uk/research/animals> for information on the process.