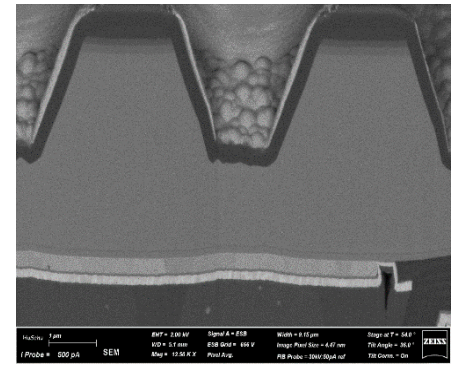
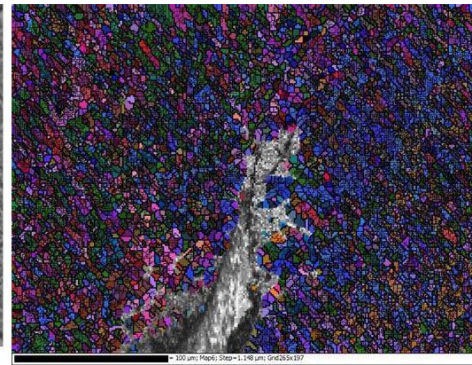
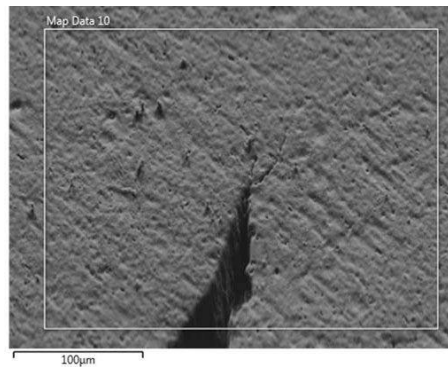
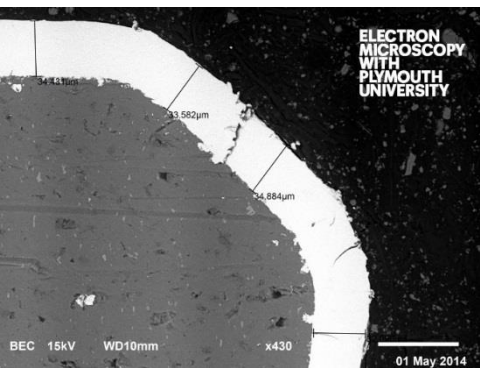


# Plymouth Materials Characterisation Project Launch

*Bringing 3D analysis and imaging, on the  
nano-scale, to the South West*



**ELECTRON  
MICROSCOPY  
WITH  
PLYMOUTH  
UNIVERSITY**

**Claire Pearce  
Project Manager**



# Tonight's proceedings:

- 1. Welcome and introduction** — Professor Jerry Roberts (Deputy Vice Chancellor, Research & Enterprise)
- 2. PEMC and the Plymouth Materials Characterisation Project** — Dr Roy Moate and Dr Natasha Stephen
- 3. The FIB-SEM and what it can do** — Dr Natasha Stephen and Keith Dicks (Oxford Instruments)
- 4. Visit the FIB-SEM in PEMC**
- 5. What the FIB-SEM has done for Plessey** — John Whiteman (Plessey Semiconductors)
- 6. Any Questions?** — all speakers
- 7. Refreshments, networking and close**

# Professor Jerry Roberts

Deputy Vice-Chancellor, Research & Enterprise



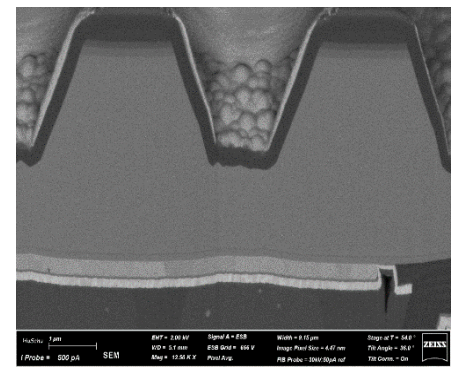
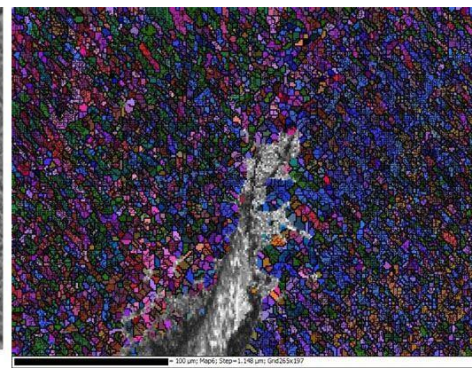
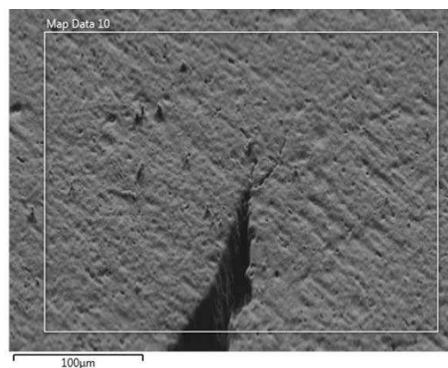
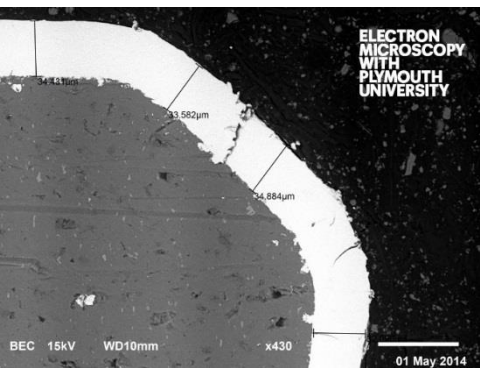
**ELECTRON  
MICROSCOPY  
WITH  
PLYMOUTH  
UNIVERSITY**



**European Union**  
European Regional  
Development Fund

# Dr Roy Moate and Dr Natasha Stephen (PMCP Directors)

## PEMC and Plymouth Materials Characterisation Project



# Meet the FIB-SEM



**ELECTRON  
MICROSCOPY  
WITH  
PLYMOUTH  
UNIVERSITY**



**European Union**  
European Regional  
Development Fund

**John Whiteman**  
Plessey Semiconductors



**ELECTRON  
MICROSCOPY  
WITH  
PLYMOUTH  
UNIVERSITY**



# Any Questions?

- Keith Dicks – Oxford Instruments
- Dan Haspel – PEMC
- Dr Yang Liu – PEMC
- Dr Roy Moate – PEMC
- Dr Natasha Stephen – PEMC
- John Whiteman – Plessey Semiconductors



# Plymouth Materials Characterisation Project

We're looking for innovative, small-medium sized companies, based in Devon to:

- Examine your product in the FIB-SEM (free access)
- Receive in-depth support from our Technical Specialists, FIB-SEM and expert academics – leading to:
  - New product / process development
  - Funding to support ongoing product/company innovation (e.g. Innovate UK Industrial Strategy Challenge Fund, KTP):
    - e.g. Emerging & Enabling Technologies – 28/03/18 (*biofilms, graphene, electronics, sensors and photonics*) - £19m

Thank you – enjoy the rest of the evening!

PlymouthEMC



@EMC\_PlymUni

[claire.pearce@plymouth.ac.uk](mailto:claire.pearce@plymouth.ac.uk)

01752 588908