



File Transfer Software - Tunnelier

Download from - <http://www.bitvise.com/download-area>
and under download Tunnelier (SSH Client) click Tunnelier Installer to download the client.

Once downloaded, install the client and then double click the desktop icon to start the program.

The following log in screen (Figure 1) will appear:-

Enter your user name, the IP of the cluster you wish to connect to and change Authentication Initial method to password. Click Login to start login procedure.

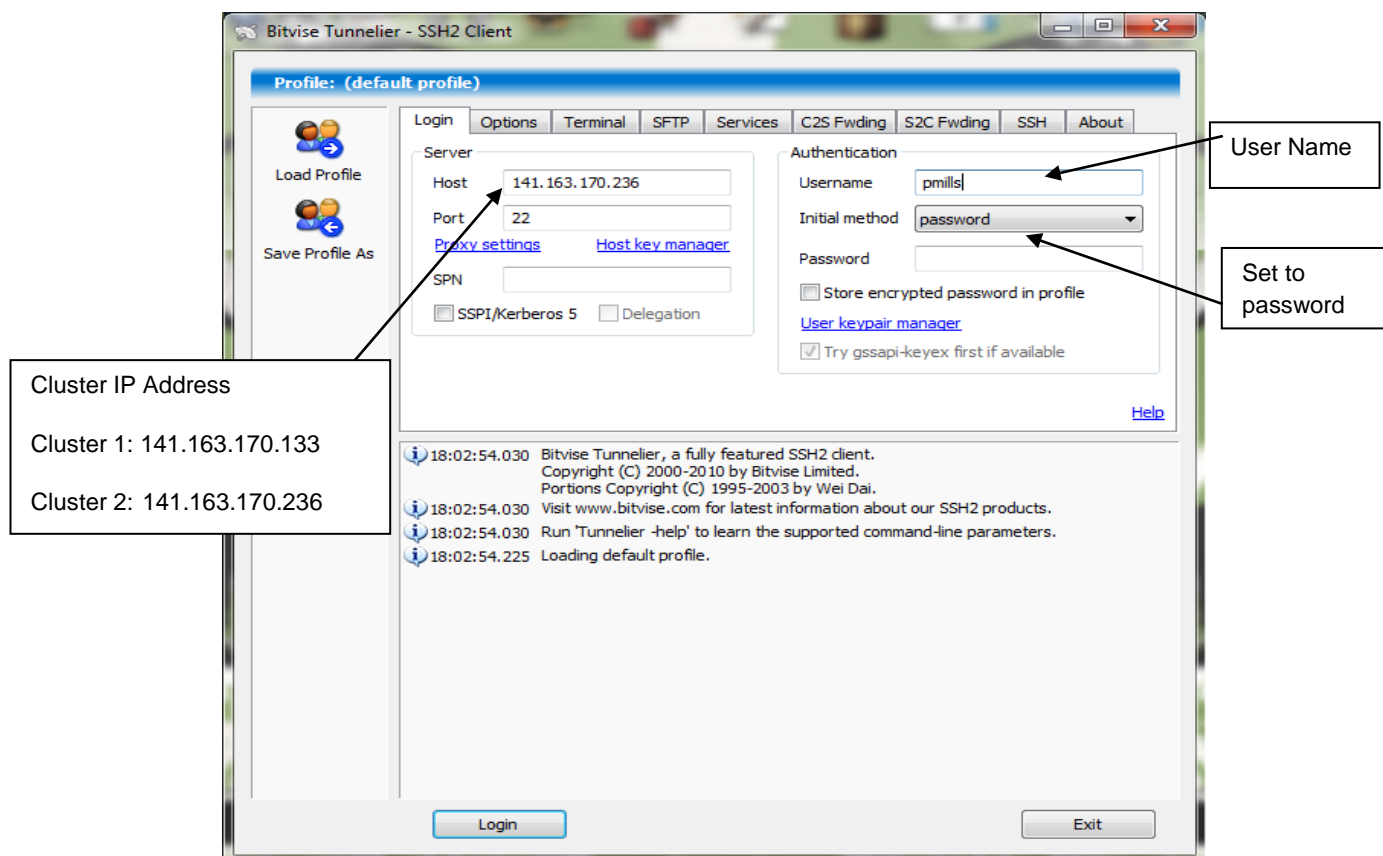


Figure 1: Log in Screen



File Transfer Software - Tunnelier

You will now be asked to enter your password

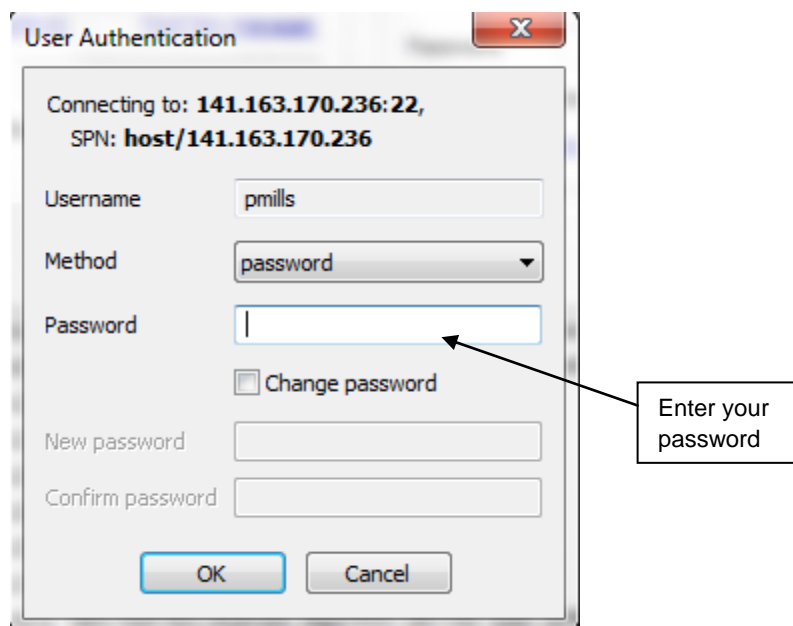


Figure 2: Password Screen

Once logged in you will see two screens:-

A console screen (Figure 3) and a file listing screen (Figure 4).

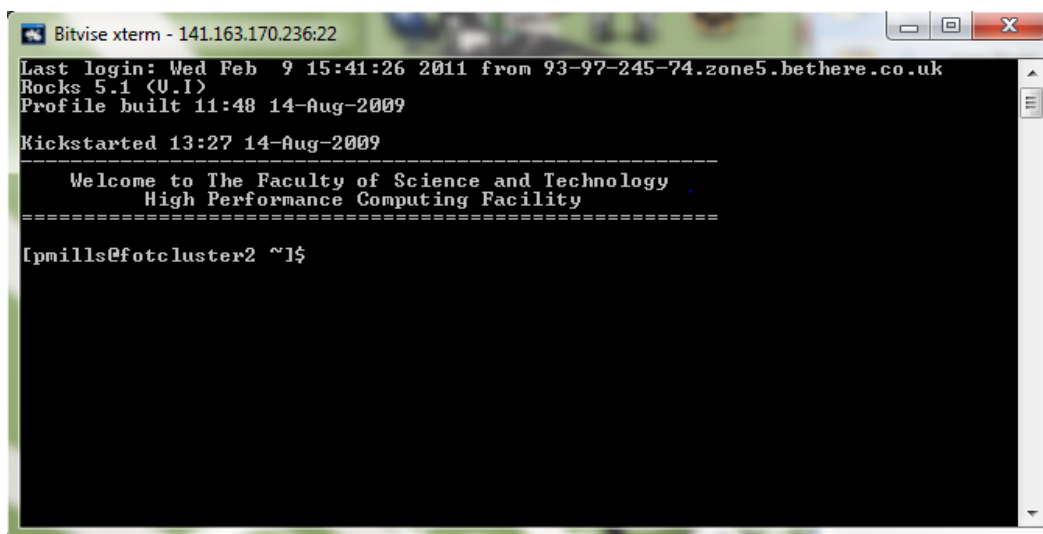


Figure 3: Console Screen



File Transfer Software - Tunnelier

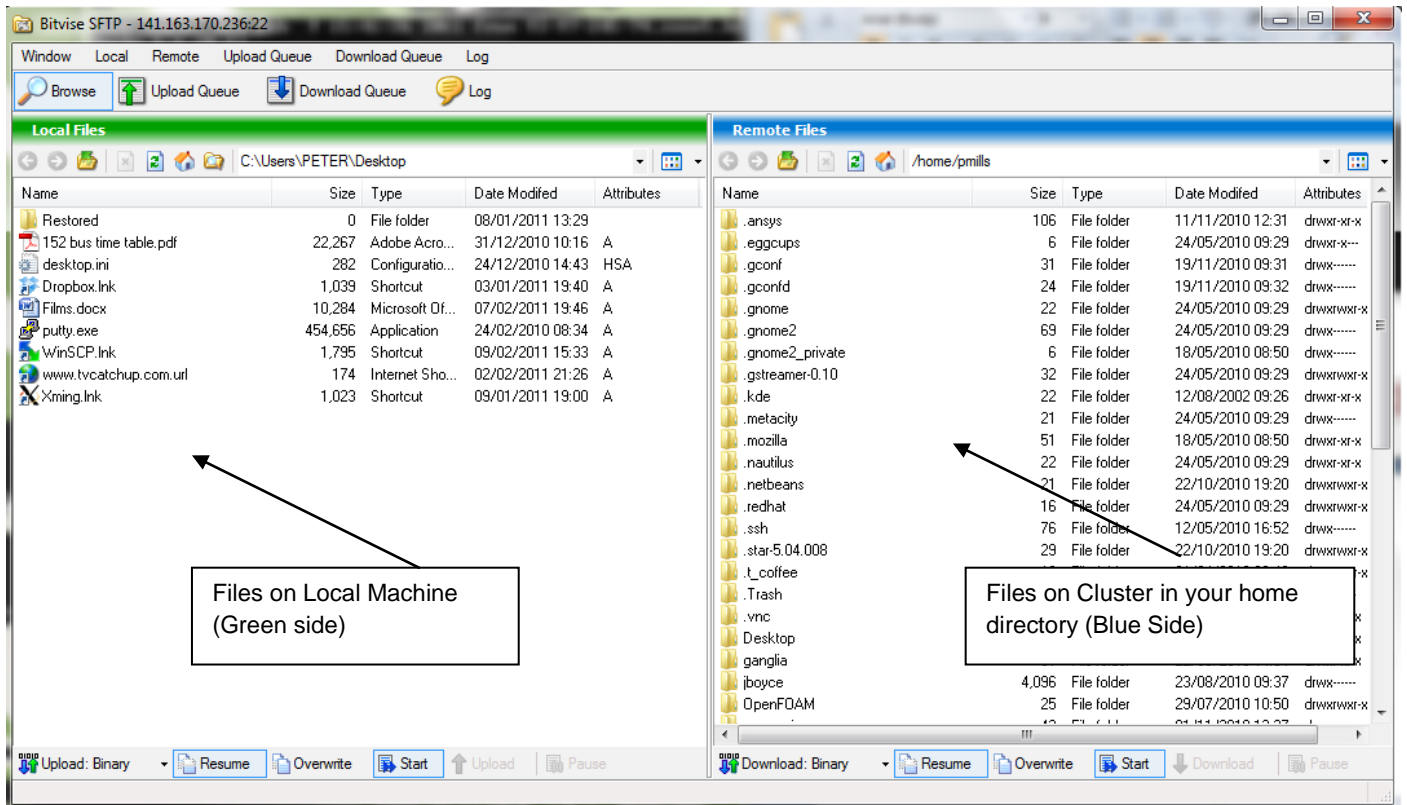


Figure 4: File Listing Screen

You can now start to upload files to you home folder on the cluster, by simply dragging and dropping them. It would be advisable to create a new folder on the cluster so that you have a specific place for your job files, otherwise all the files will be a root level and it will soon become untidy.

If you wish to browse to other folders on your local machine then click the browse folder option as shown below in figure 5 and 6

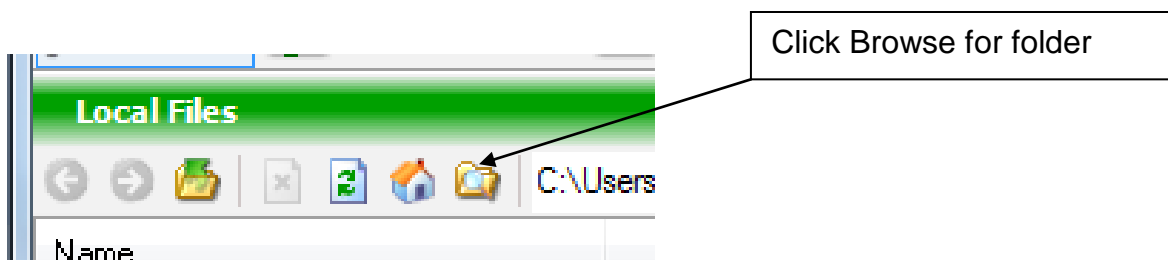


Figure 5: Browse for different folder