

Download – WinsSCP form <http://winscp.net/eng/download.php>  
(use WinSCP 5.5.2 or latest stable release)

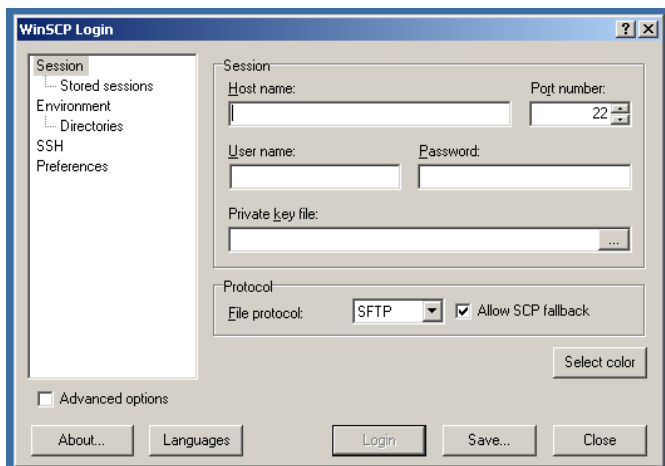
Run the application – you will see displayed a login window (see Fig 1)

Depending on which cluster you are using.

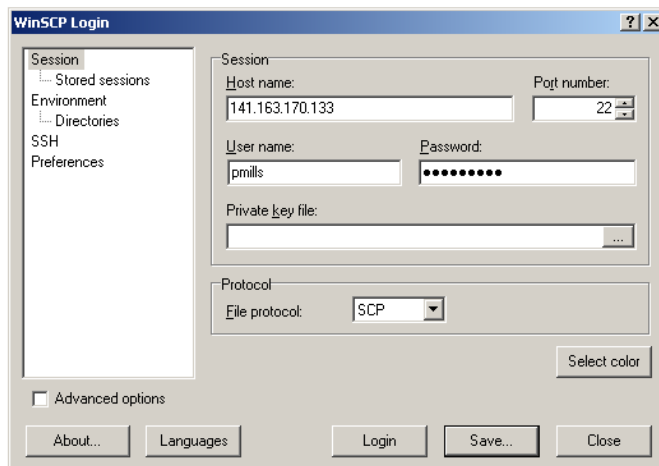
Enter 141.163.170.133 (fotcluster1) or 141.163.170.236 (fotcluster2) in the host Name.

Enter User Name and Password for the cluster as previously supplied to you.

Change Protocol to SCP. (Fig 2)



(Fig 1)



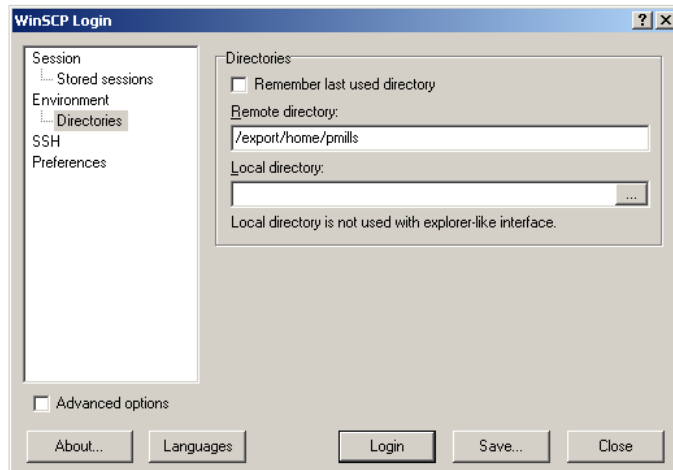
(Fig 2)

Select > Environment > Directories.

In the remote directory - enter in /export/home/<your user name>

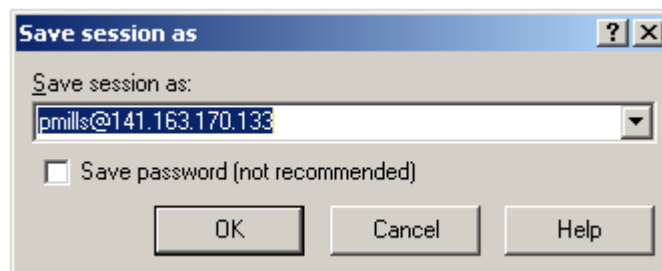
In the local directory – either leave blank or enter path to the folder you require as the default.

(Fig 3)



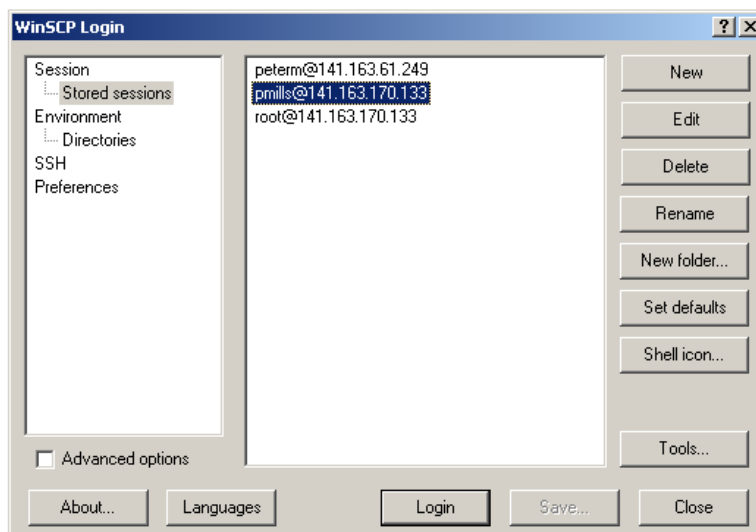
(Fig 3)

Now click Save. This will display a “Save Session as” window, click OK to save. (Fig 4)

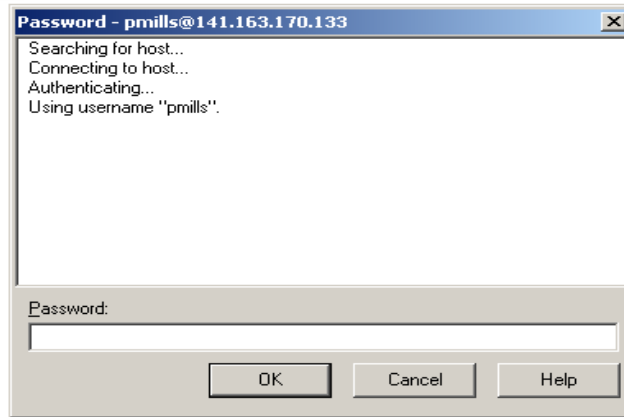


(Fig 4)

You are now ready to Login to the cluster:-



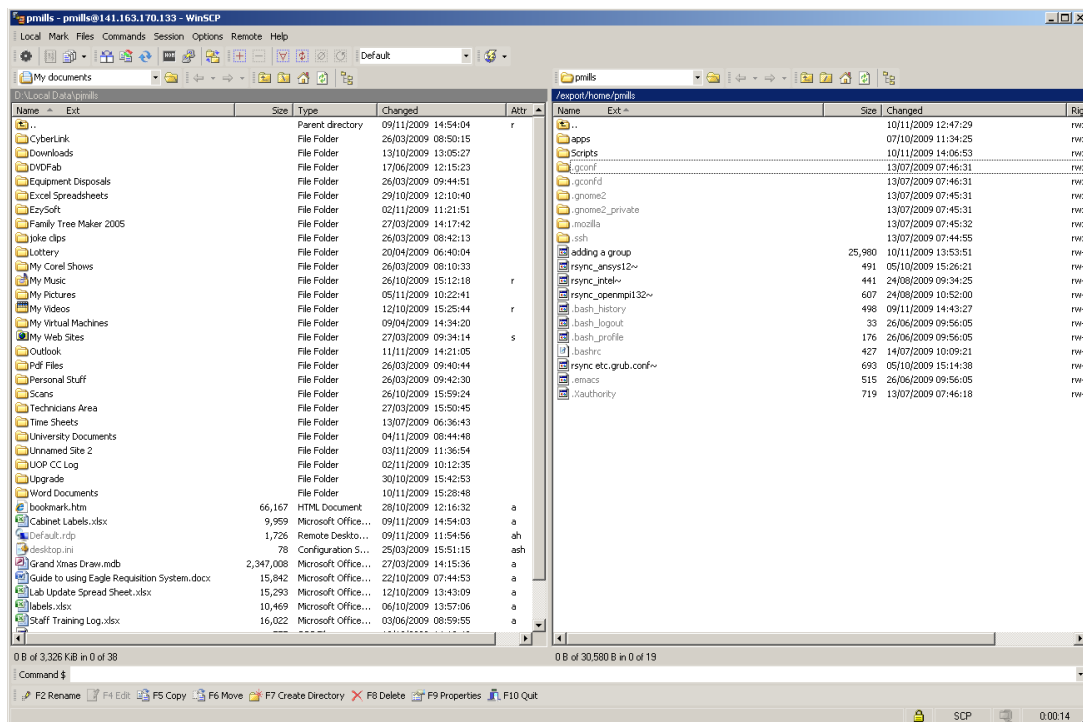
Select the saved session and click to login.



Enter your password, click OK

Once you have logged in, the session window will open.

This will show on the left panel your local machine and your home directory on the cluster.



To transfer files to and from the cluster, simply drag and drop the files or folder/s as required.